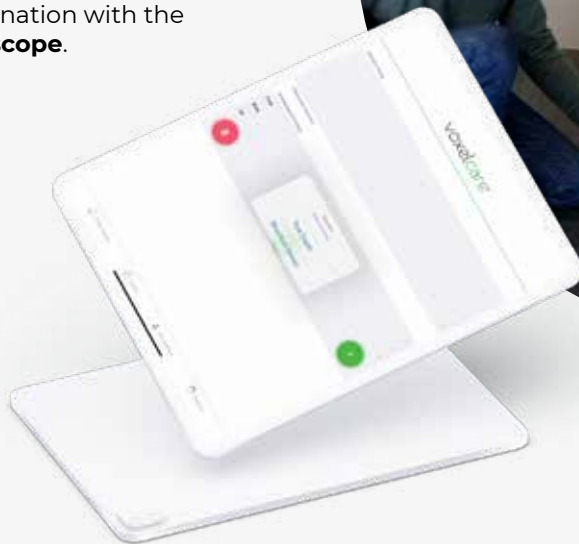


VoxelScan & Podoscope



VoxelScan is our latest software development aimed at using an iPad or iPhone without needing any additional hardware. Using the front facing camera, it provides users with the ability to scan in full and semi weight-bearing positions, in combination with the **Podoscope**.



The Podoscope is a foot platform designed for use with VoxelScan, creating a complete solution for handheld scanning.



DISCOVER ALL THE BENEFITS OF
HAVING THE **VOXELCARE ECOSYSTEM**

Scan Design Produce



CNC MILLING



3D PRINTING





High quality

30,000 dots are projected onto the scan object to create a depth map, which is captured and analysed by an infrared camera.



Easy to use

Simply download from the app store and link to your existing user account. Scan directly in the app and upload the orders for 3D modelling. Finally send for production via CNC milling or 3D printing.



Secure

External apps and file conversions are not necessary with this seamless process, as all the data remains in the cloud in your password protected user account.



VoxelScan

Scan



Design



Produce



VoxelScan



Features



Scan time

<10 seconds



Options

Black and white



Compatibility

Available for iPad Pro and iPhone X and newer



File type

Direct integration to existing web app



Scannable items

Foot, foambox, insole



Independent

Front-facing camera means no more need for the Structure Sensor attachment



Scan distance

15cm - 50cm



Resolution

30,000 depth mapping dots with infrared camera system



Flexibility

Scan in full weight-bearing position in combination with the Podoscope, something not possible with previous iPad scanning solutions

Scan



Design



Produce



Podoscope

In-Store Unit



Technical specs



Dimensions

440 x 420 x 255 mm



Weight

10kg



Led Lighting

Multiple colour options
(remote included)



Load capacity

Max. 120kg

Best complement

Enables foot scanning options for Full + Semi weight-bearing positions.



Scan



Design



Produce

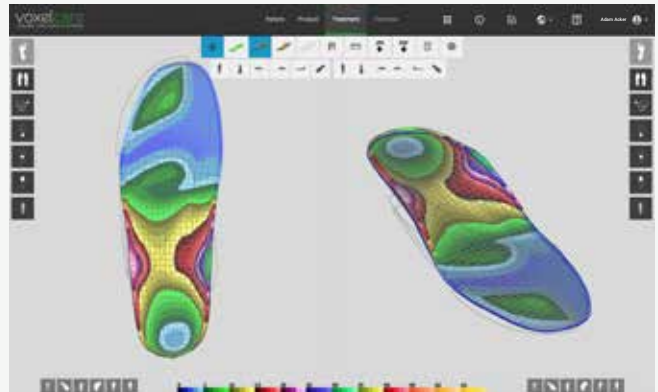
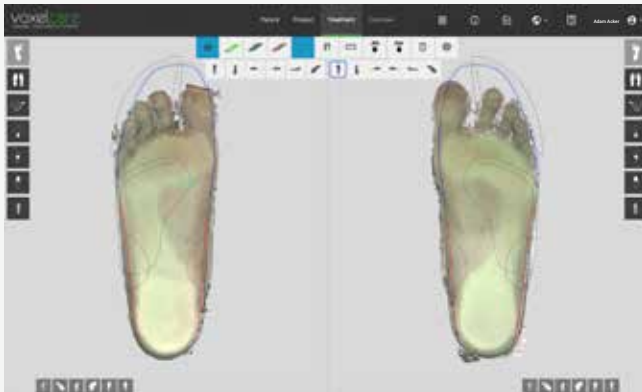


VoxelScan

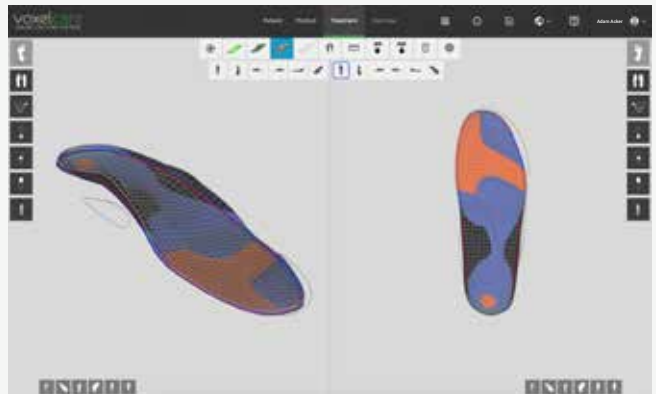


Fully integrated

VoxelScan is integrated with your Voxelcare CAD system, directly import the files and start designing.



Voxelcare Online CAD



Scan Design Produce



CNC MILLING



3D PRINTING

- Access from any computer
- Powerful and easy to use
- Adapted to your workflow
- Always updated

State-of-the-art

3D Printing or CNC Milling



A new generation
of efficient and
quiet machines.



Efficient



Quiet



* Example shown VCM70,
other milling machines available.

For best results

Discover our wide range of products designed
to obtain the best quality and health results.



EVA LINE



3D PRINTING



HYBRID.

Scan



Design



Produce

